

User Manual

Wireless Monitoring System



Android



Iphone

Be sure to read this book before installing or using the surveillance camera.
Keep the book in a safe place so that you can read it whenever necessary.

Please read carefully before use it

FK.2023.013.E

Contents

1.Instruction of Camera.....	01
2.Instruction of NVR video recorder.....	02
3.Instruction of NVR monitor.....	03
4.Instruction of Connection.....	04
5.Login Method of NVR Video Recorder.....	05
6.Steps to set up system time and language.....	06
7.Cameras pairing.....	07
8.Steps to set up 24-hour video recording.....	08
9.Steps to set up motion detection video recording.....	09
10.Steps to set up video playback.....	10
11.Steps to set up backup.....	11
12.How to enable the NVR connect to the Internet?.....	12
13.Steps to set up motion detection Email alarm.....	13
14.Steps to set up view on PC.....	18
15.Steps to set up view on Mobile Devices(iOS/Android).....	23
16.FAQ.....	24
17.Contact US	

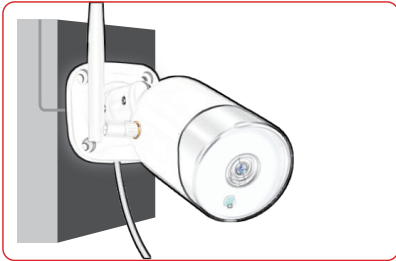
Instruction of Camera

- 1.This manual is for reference only.Due to the device update,it may be different from the content recorded in this manual.
- 2.Upon receiving the product,please check and confirm whether the accessories are complete.
- 3.Before installation, please turn on the power to check whether the camera picture appears on the NVR(monitor).
- 4.The NVR has built-in wifi receiver. In order to ensure the IP camera can receive the NVR signal perfectly, please install the camera in the scope that wifi signal can arrive. (please test whether the NVR wifi signal is reachable or not in advance).
- 5.All the cameras have been matched with NVR, and the NVR can be viewed and operated immediately after being powered on.
- 6.If you would like to remote viewing on your phone,you need to connect the NVR video recorder and the router with a network cable.

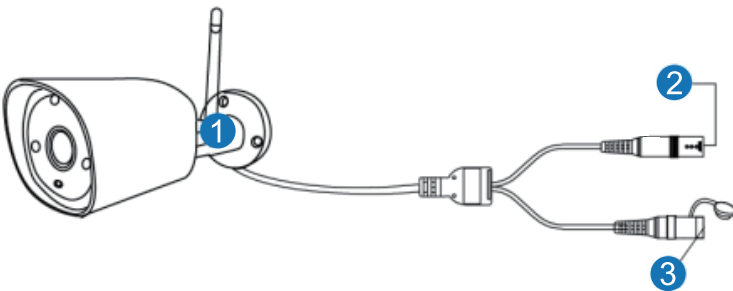
Note:

Before installing it on the wall, please confirm whether the WIFI signal can be received. (It is recommended to install within 15 meters from the NVR.) If there is no image for more than 1 minute, please press and hold the camera reset button to reset it, and re-pair to add.

Install on the wall

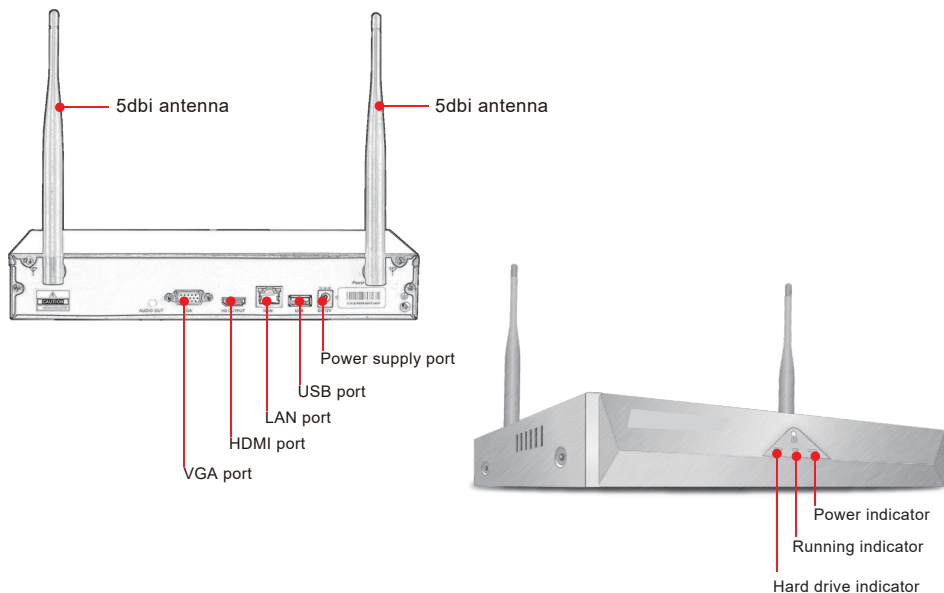


install on the ceiling



- 1.WIFI Antenna: Connect with the NVR's WiFi signal
- 2.DC Interface: Power Input (12V1A)
- 3.Reset button: Press the reset button for more than 3 seconds to reset the factory settings and enter the pair mode.

Instruction of NVR Video Recorder

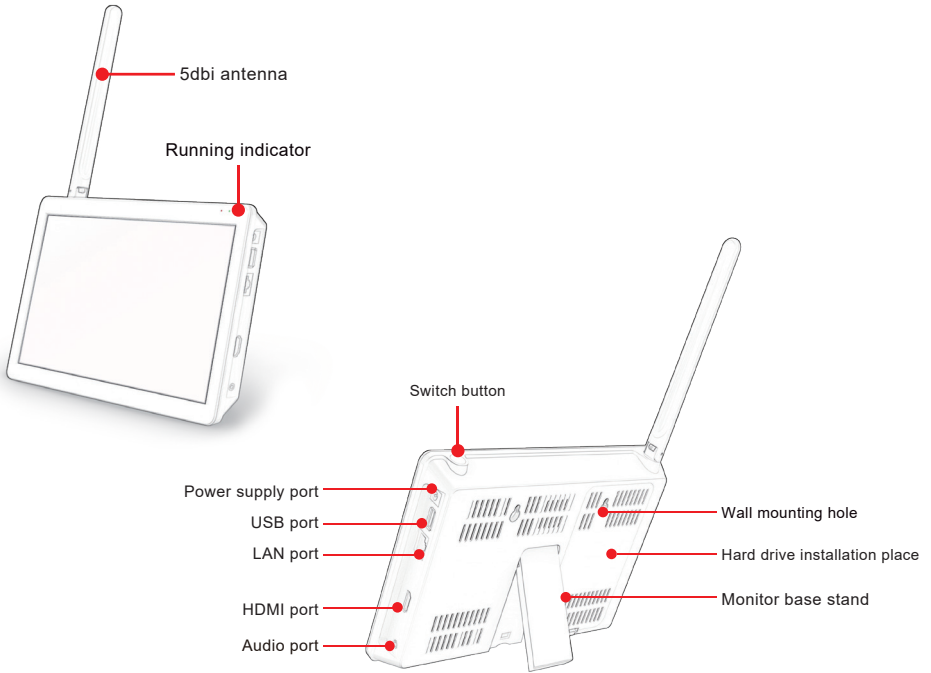


1. VGA port: Connect NVR and monitor with VGA cable(package does not include VGA cable).
2. HDMI port: Connect NVR and TV/monitor with HDMI cable.
3. LAN port: Connecting the NVR and router with a network cable if you want to view remotely.
4. USB port: Operated with a USB mouse,used to save video files with a USB flash drive,used for system upgrade.
5. Power supply port: 12V/2A DC power adapter.
6. Antenna:Transmit wifi signal from NVR.
7. Power indicator: Light will turn to red when the NVR is powered.
8. HDD indicator:Light will turn to green when HDD works normally.

Note:

- A. The number of cameras supported to be added to NVR is related to the number of NVR channels (you can find the number of channels supported by NVR in "Record Mode").
- B. Laptop can't be used as a display to present real time picture,but you can view real-time picture and playback local videos on TV and PC.

Instruction of NVR Monitor



- 1.Power indicator:Light will turn to red when the NVR is powered on.
- 2.Switch button:Press the button to turn on/off the screen.
- 3.HDMI port: Connect NVR and TV/monitor with HDMI cable
- 4.LAN port:Connecting the NVR and router with a network cable if you want to view remotely.
- 5.USB port:Operated with a USB mouse,used to save video files with a USB flash drive,used for system upgrade.
- 6.Power supply port: 12V/2A DC power adapter.
- 7.Antenna:Transmit wifi signal from NVR.
- 8.Monitor base stand:90degree adjustment.

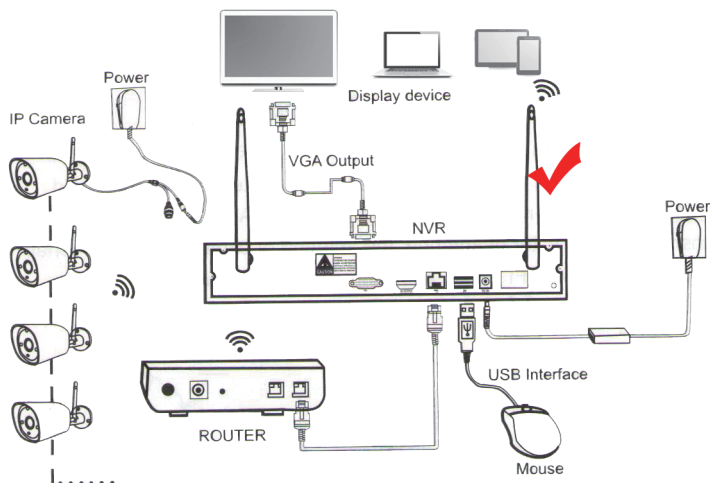
Note:

A. The number of cameras supported to be added to NVR is related to the number of NVR channels (you can find the number of channels supported by NVR in "Record Mode").

B. Laptop can't be used as a display to present real time picture,but you can view real-time picture and playback local videos on TV and PC.

Instruction of Connection

(1) Connection Instruction of NVR Video Recorder:



Step 1: Power up the cameras using the power supplies(12V 1A), connect the NVR to your wall socket with its power supply(12V 2A).

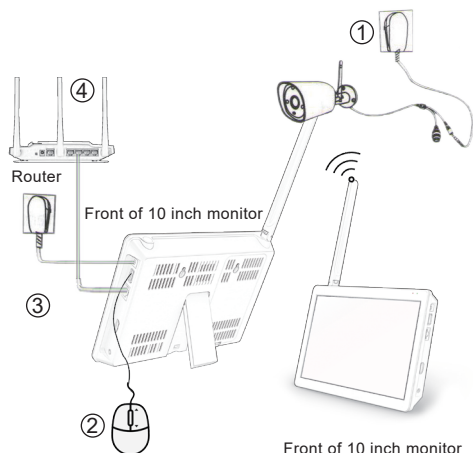
Step 2: Connect the NVR to the TV/monitor with a VGA / HDMI cable.

Step 3: Insert the mouse.

Step 4: Enter the NVR interface (you can see the real-time view after tens of seconds)

Step 5: Insert the network cable into the LAN port of the NVR and router (this step is necessary for remote viewing on the mobile phone/PC)

(2) Connection Instruction of NVR Embedded Display Model:



Step 1: Power up the cameras using the power supplies(12V 1A), connect the NVR to your wall socket with its power supply(12V 2A).

Step 2: Insert the mouse.

Step 3: Enter the NVR interface (you can see the real-time view after tens of seconds)

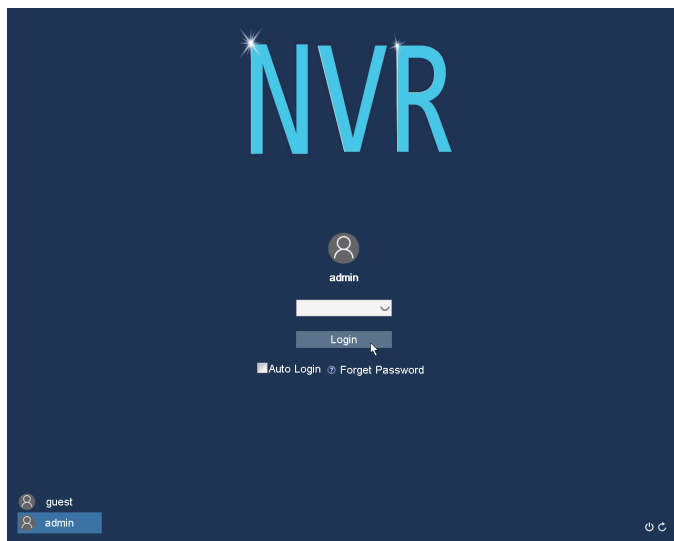
Step 4: Insert the network cable into the LAN port of the NVR and router (this step is necessary for remote viewing on the mobile phone/PC)

Note: This NVR supports 2.5" HDD.

Login Method of NVR Video Recorder

Method of NVR login

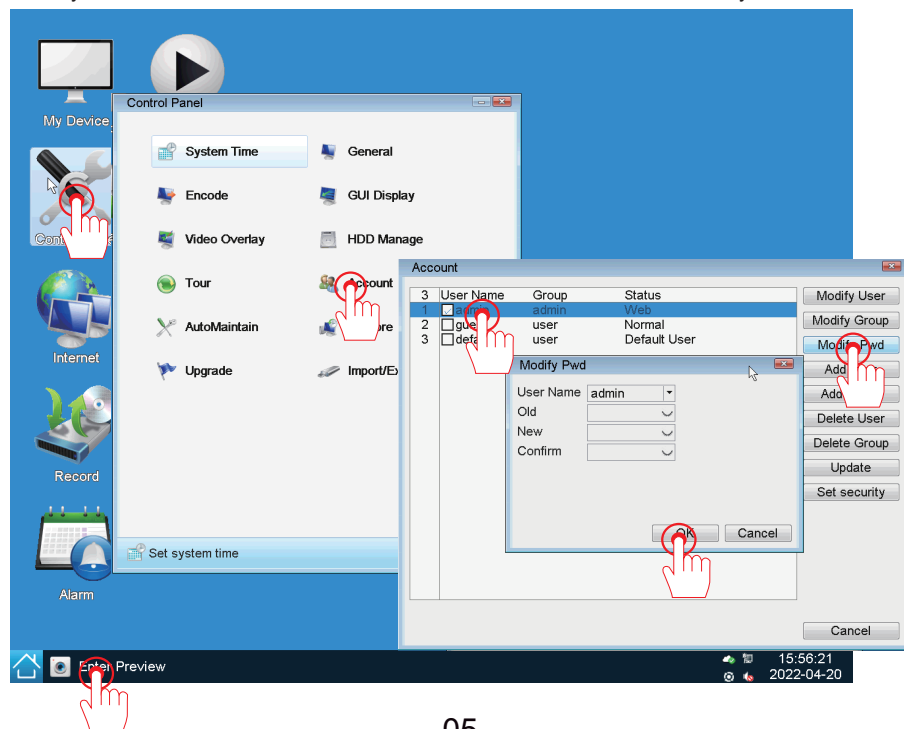
The username is admin, and no password by default (please keep password to be blank), then clicked "Login" to enter the NVR system directly



Change Password

Tips: To protect your privacy, please follow the steps:

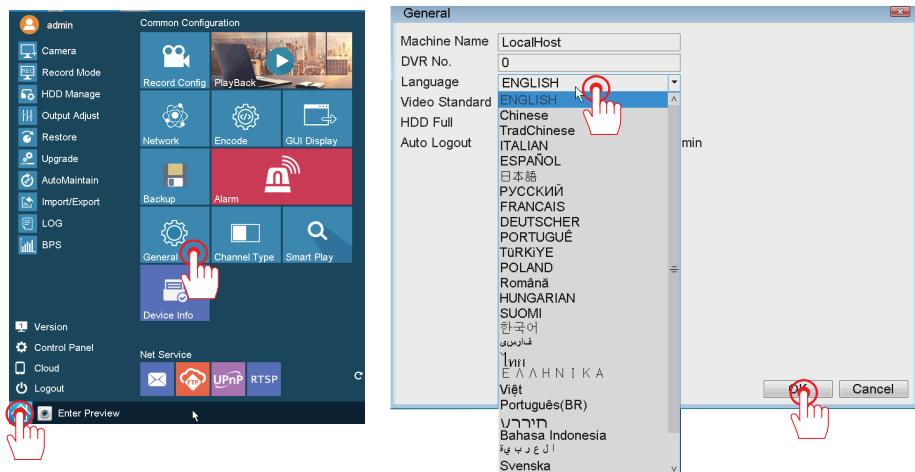
Click system in the lower left corner > Control Panel > Account > User > Modify Pwd



Steps to set up system time and language

1. Language selection, the default is English. If you need to change the language please follow the steps below.

Click system in the lower left corner > General > Language.



1. How to set time and date?

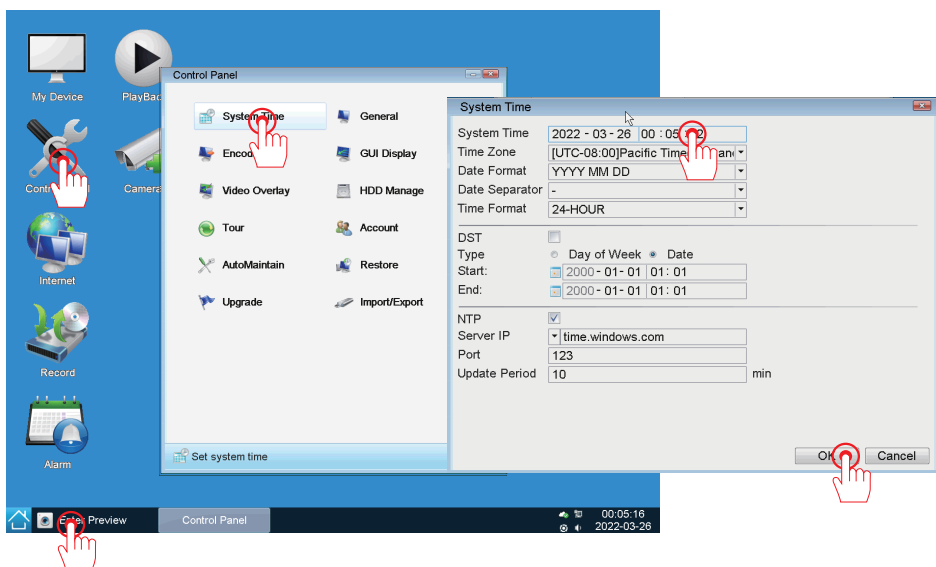
(1) Adjust system time manually:

Click system in the lower left corner > Control Panel > System Time. The time can be modified manually, and the "Daylight Saving Time" can be set.

(2) Adjust system time automatically:

Click system in the lower left corner > Control Panel > System Time.

Choose the corresponding time zone. The local time is obtained automatically. (It is recommended to connect the network cable to automatically adjust the time).



Cameras Pairing

The NVR and network cameras are connected to the power supplies and placed at a close distance to facilitate the connection operation;

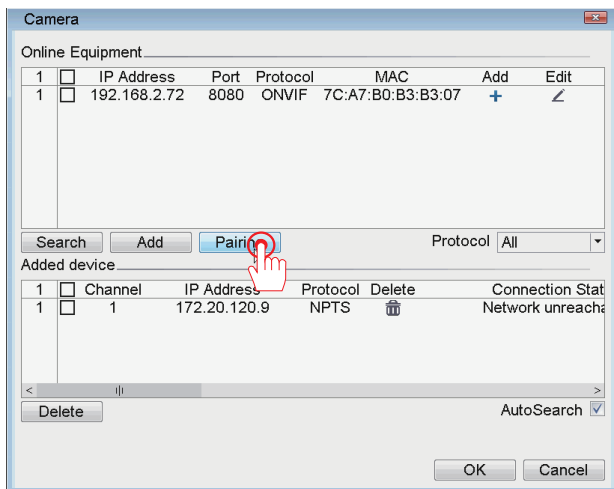
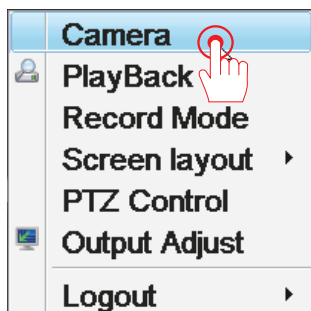
(If the waiting time is too long and the images does not appear, we recommend re-pair again.)

Step 1 : Right-click the screen to open the main menu>Pair.

Step 2 : Long press the reset button of the network camera for about 3 seconds;

Step 3: The network camera is automatically connected to the NVR, and a picture appears on the display, that is ,the pairing is successful.

Tips: After the pairing is successful, the NVR does not delete the network camera, and the network camera is not paired to other NVRs. After the NVR and the network camera restart, they can automatically connect to screen



Choose the Mounting Location

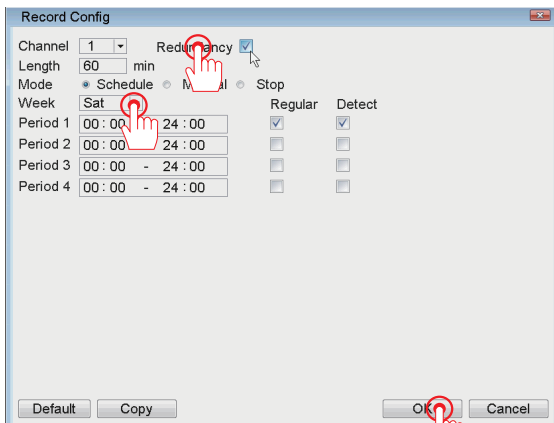
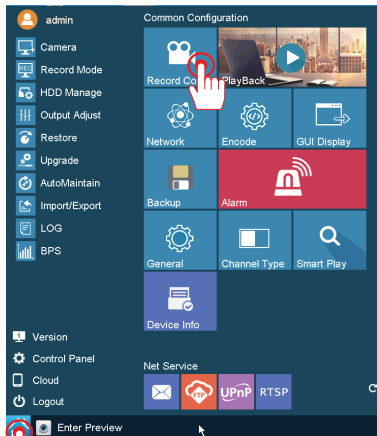
Step 1:Mount the cameras anywhere within the Wifi range, plug the power adapter to the camera and connect it to power socket nearby.

Step 2:The camera should start streaming videos within 1 minute(or less).

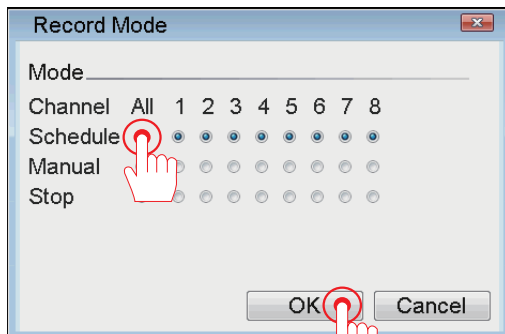
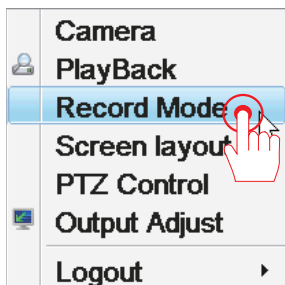
Step 3:If the video is not displayed, it may be due to external factors that have interfered with the wireless signal, such as multilayer concrete walls, glass and other objects between the NVR and camera, or the distance between the camera and the NVR is too far,please try to move the camera closer NVR; or antenna placement deviation,please try to place the antenna upright and vertically.

Steps to set up 24-hour video recording

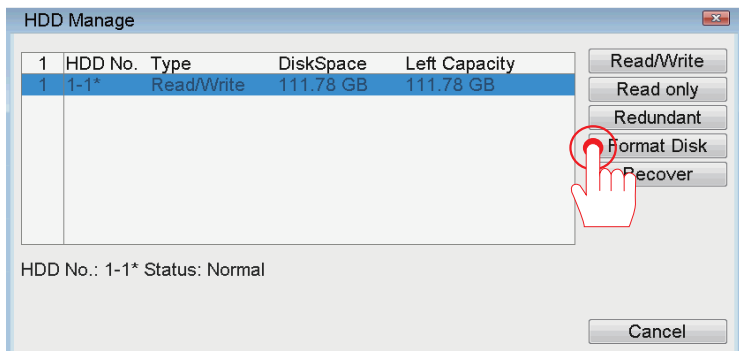
Step 1: Click system in the lower left corner > Record Config > Select Channel > Click Recording Mode(Schedule,Manual,Stop)> Select Week and Recording Time Period.



Step 2: Right-click the screen to open the main menu > Record Mode
(The videos is only recorded in the set channel and time period)

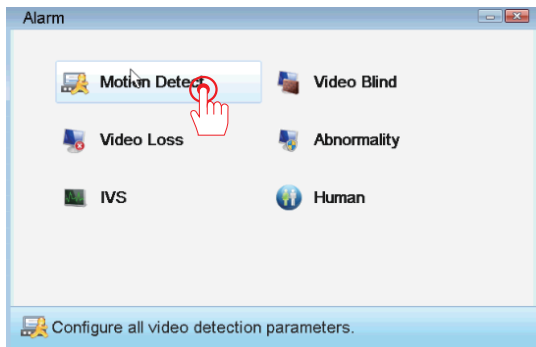
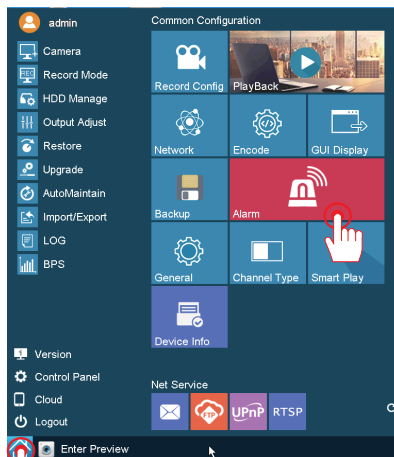


Note: A hard disk is required for recording setup. If you purchased an NVR without a hard drive, you will need to purchase one yourself. NVR temporarily only supports 2.5-inch HDD hard disk, not SSD hard disk. When using it for the first time, you need to format the hard disk.

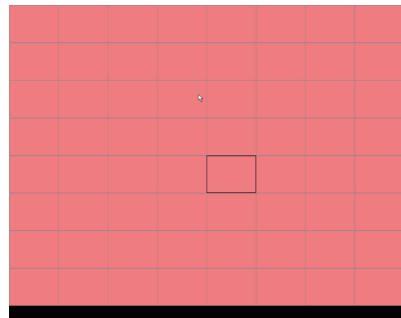
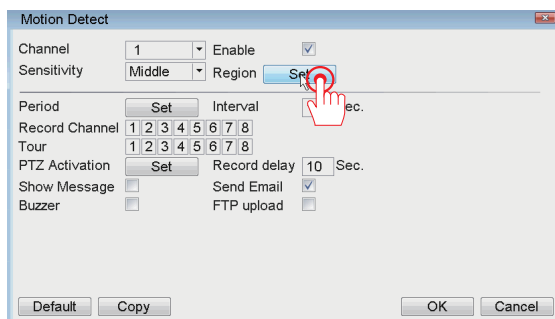
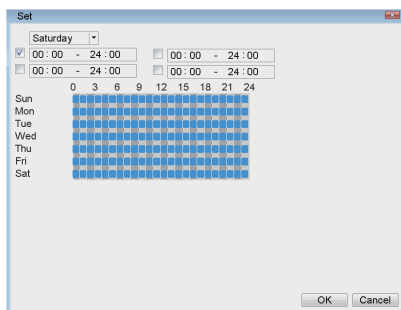
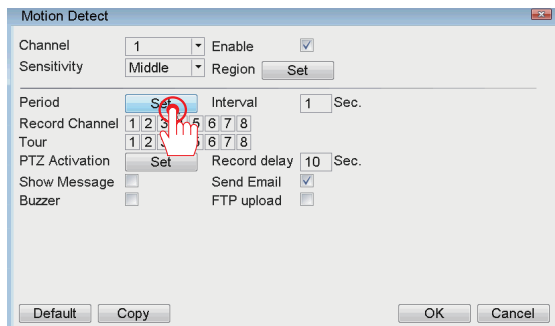


Steps to set up motion detection video recording

Step 1(Enable recording): Click system in the lower left corner > Record Config > Select Channel > Click Recording Mode (Schedule, Manual, Stop) > Select Week and Recording Time Period.

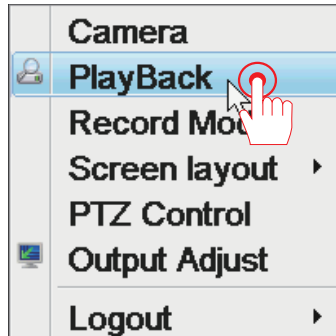
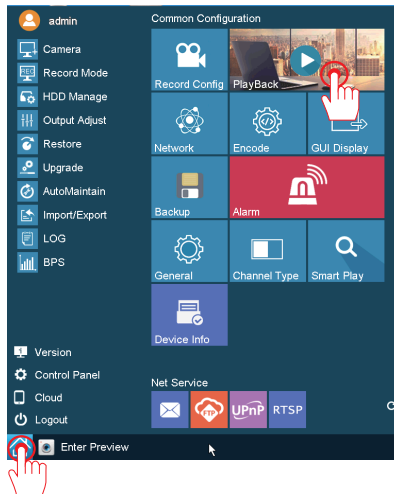


Step 2(Motion Detection Setting):Click system in the lower left corner > Alarm > Motion Detect (or click Enter Desktop > Alarm > Motion Detect), and select the recording channel. Trigger an alarm in the selected region and automatically record Motion detection video.(The alarm range can be set at all)



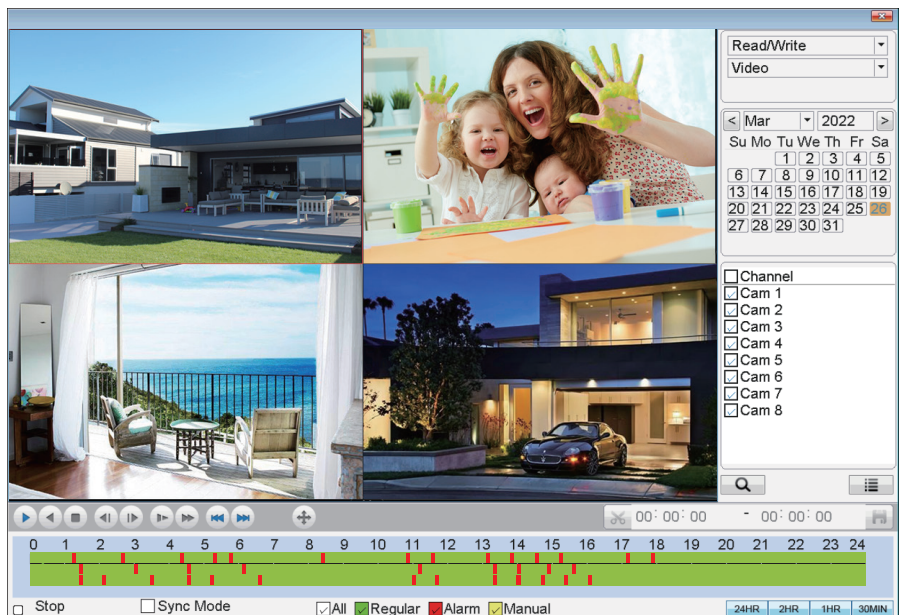
Steps to set up video playback

Step: Click system in the lower left corner > Playback (or Right-click the screen to open the main menu > Playback)



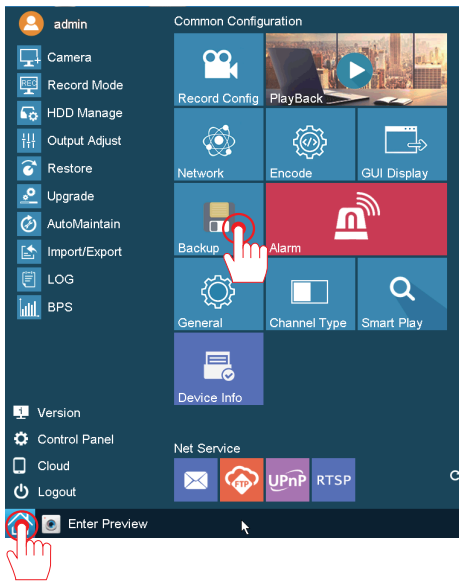
You can search criteria: date, time, channel, recording mode, and then click search. Under “search” you can view all the clips of the video. Select the file and double-click to play, or click the “Play” button to play.

Supports up to 8 channels of simultaneous playback and 16 times fast forward playback.



Steps to set up backup

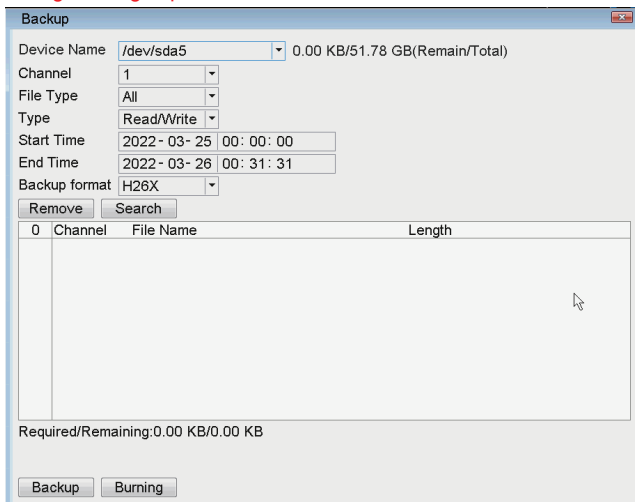
Step: Click system in the lower left corner > Backup



Please follow the steps to backup the video data

- 1) Insert the USB flash drive into the USB port on the back of the NVR.
- 2) Select the channel and Record Mode you want to search.
- 3) Select time period and click the "Search" .
- 4) Left click the mouse to select the video you want to back up and click "Backup"
- 5) After completing the search,you can find the Begin Time,End Time,Duration,and Size of the video data.

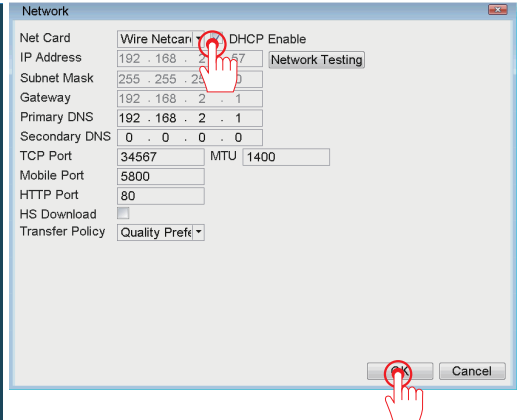
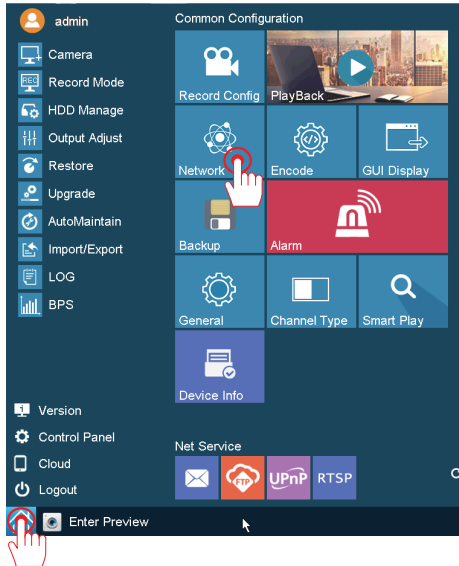
Tips: Because the NVR has only one USB interface, you need to prepare a USB Hub for backup video. In order to make video backup successful,please ensure that the USB flash drive has enough storage space.



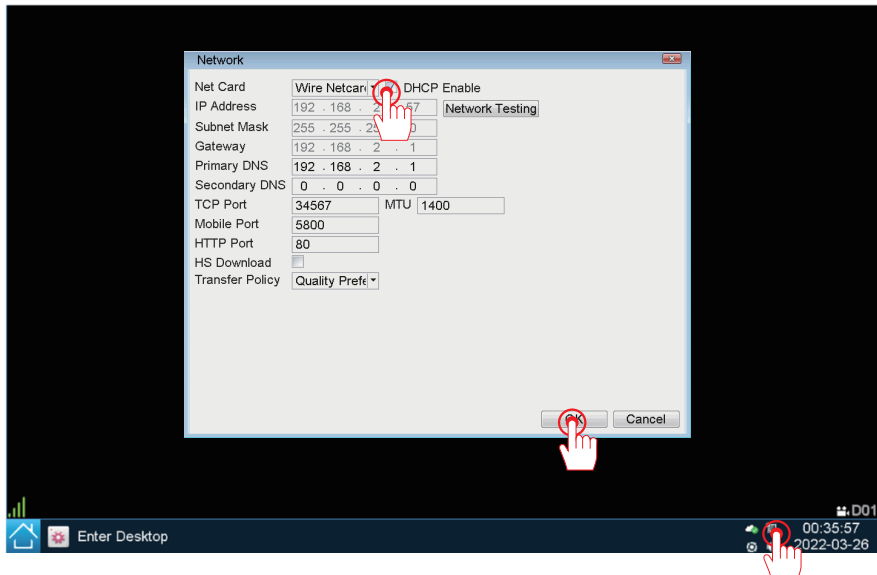
How to enable the NVR connect to the Internet?

Step 1: Click system in the lower left corner > Network

After connecting the NVR device and the router with a network cable, tick Obtain "DHCP Enable" , the NVR will automatically identify the router's IP network segment address and change it to connect to the Internet, or you can manually modify the NVR's IP address.




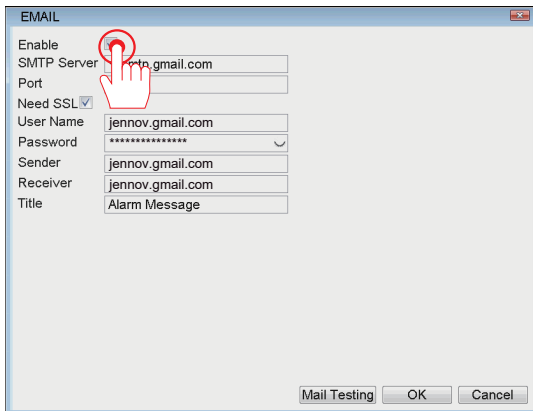
Step 2: Click the PC icon in the lower right corner > Network



Steps to set up motion detection Email alarm

Email alarm setting:

Click system in the lower left corner >  > click " Enable" .



A.Steps to set up Yahoo Mail Alarm:

Enable "E-Mail Function" ,select the "More parameters" option.

SMTP Provider:Select "yahoo"

Sender: xxx@yahoo.com

Password: Email password for xxx@yahoo.com

SMTP Server: smtp.mail.yahoo.com

Port: 465

Encryption Type: SSL

Sendee : xxx@yahoo.com

Click "Test" to check if the settings are successful.When shows "Test Complete" , check your Yahoo inbox whether it receive the alarm successfully.

B.Steps to set up Gmail Alarm:

Enable email function,check the "More parameters" option.

SMTP Provider:Select "gmail"

Sender:xxx@gmail.com

Password:[Use the 16-digit password generated randomly by Gmail System.

Please read the following Step C.to obtain the password.

SMTP Server: smtp.gmail.com

Port: 465

Encryption Type: SSL

Sendee 1: xxx@gmail.com

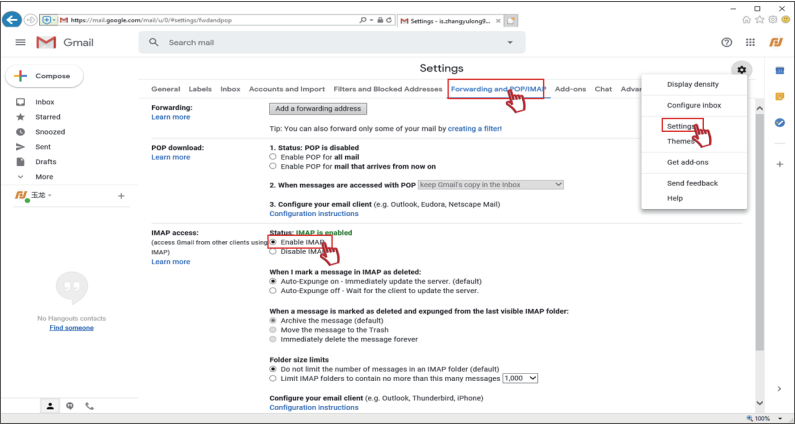
Click "Test" to check if the settings are successful.When shows "Test Complete" , check your Gmail inbox whether it receive the alarm successfully.

Note:

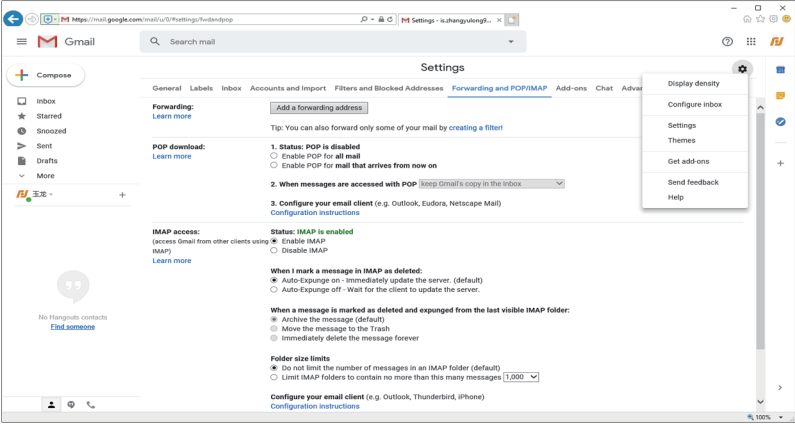
If you are not sure which method to set up the email alarm password is correct, you can enter your email password firstly, then test.If failed, then please follow step C to obtain 16-digit password generated randomly by your email.

C. Steps for Gmail to obtain 16-bit password

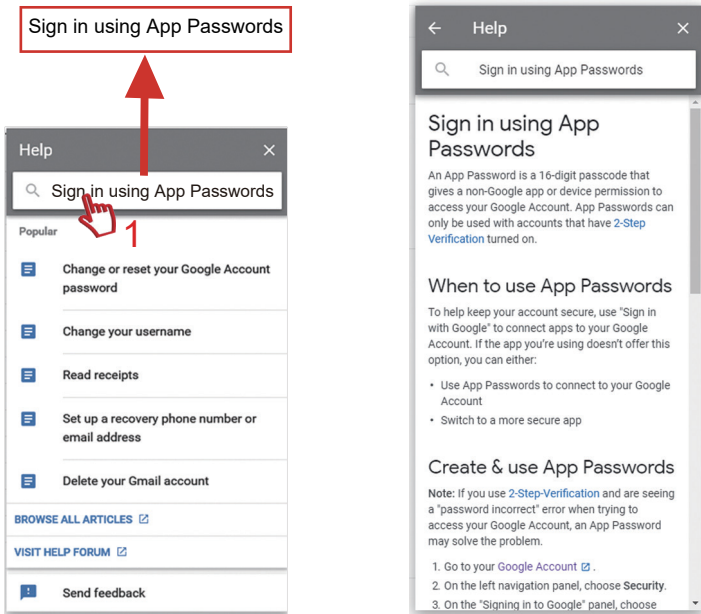
Run Gmail and enter setting,click “Forwarding and POP/IMAP” ,then enable POP/IMAP function.



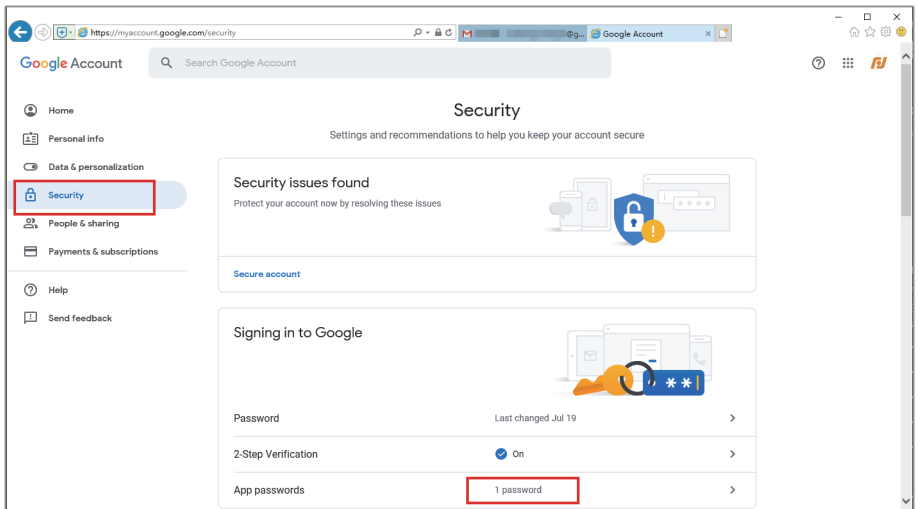
Enter main menu,and click “Help”



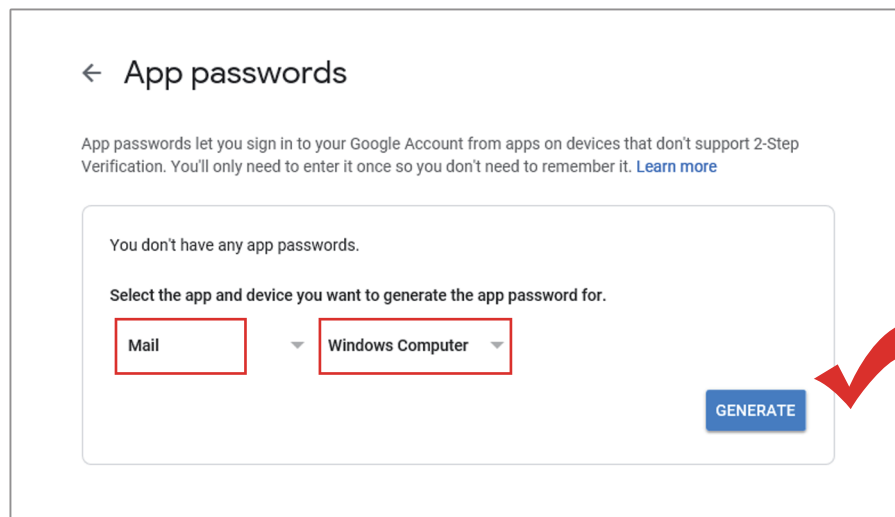
Enter "Sign in using App Passwords" and click "Google Account"



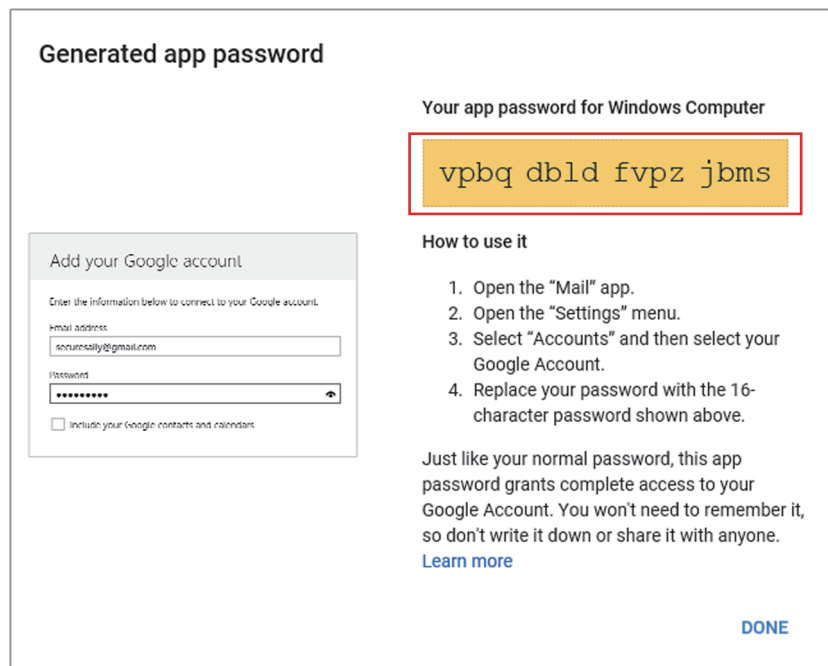
Then you will enter a new page, please enter your Gmail password and choose "Security" , finally choose "1 password" of the " App passwords" .



After entering your Gmail psaaword, you will enter "App passwords" page, select the APP(Mail) and device (Windows computer or other device) which you want to generate the app password for. Finally click "GENERATE".



The 16-bit password will show after several seconds.



EMAIL

Enable ☒

SMTP Server

Port

Need SSL ☒

User Name

Password

Sender

Receiver

Title

Mail Testing OK Cancel

The 16-bit password will show after several seconds.

Generated app password

Add your Google account

Enter the information below to connect to your Google account.

Email address

Password

☐ Include your device contacts and calendar

Your app password for Windows Computer

vpbq dbld fvpz jbms

How to use it

1. Open the "Mail" app.
2. Open the "Settings" menu.
3. Select "Accounts" and then select your Google Account.
4. Replace your password with the 16-character password shown above.

Just like your normal password, this app password grants complete access to your Google Account. You won't need to remember it, so don't write it down or share it with anyone.

[Learn more](#)

DONE

Please copy this 16-bit password to the EMAIL setting.

Note: If you are not sure which method to set up the email alarm password is correct, you can enter your email password firstly, then test. If failed, then please follow step C to obtain 16-digit password generated randomly by your email.

D. How to avoid frequent email alerts?

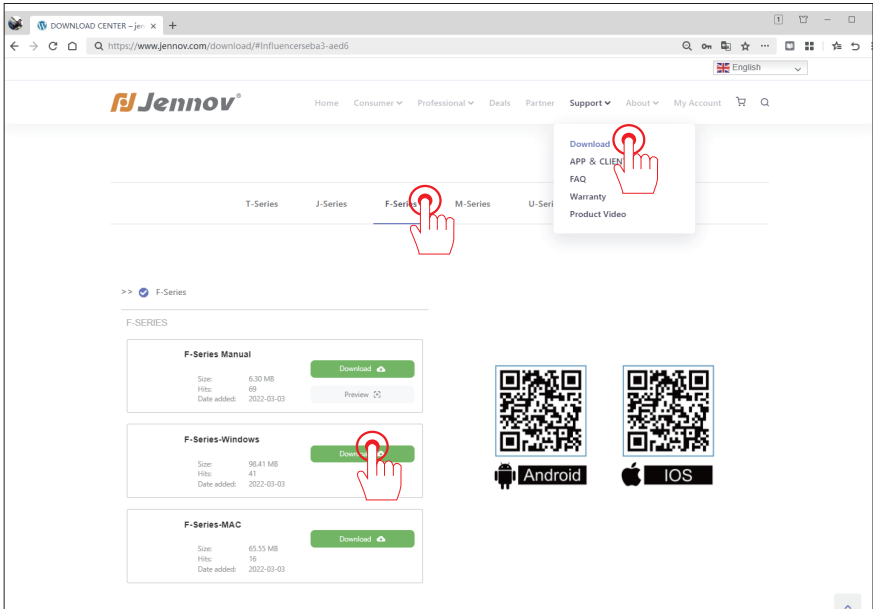
If you enable "Send Email" function, when the camera detects motion in the detected areas, you will receive Email alarm. However, you may receive lots of emails because the camera will detect everything, including leaves falling from the tree, or rain drops.

If you want to reduce useless Email alarms, please follow below steps to edit the detect areas.

Right click your mouse to enter Main Menu > Sensor, and edit the detect Region and Period.

Steps to set up view on PC

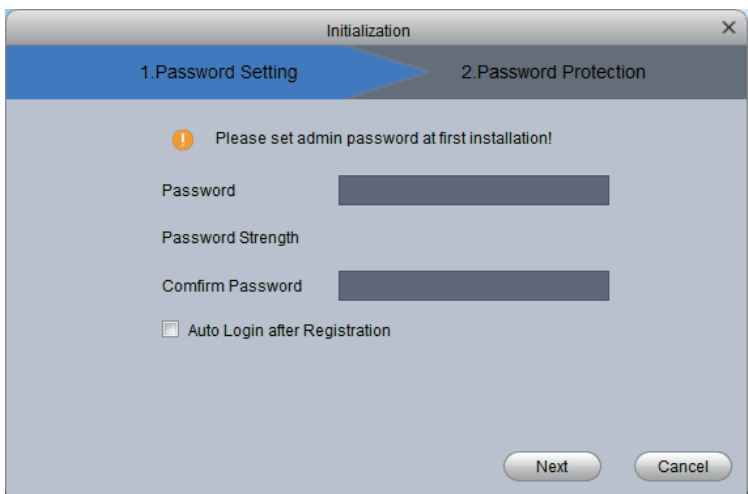
- 1.Type in the browser "www.jennov.com" .
- 2.Find "Support" - "Download"
- 3.Find the "F-Series-Windows" to download the client .



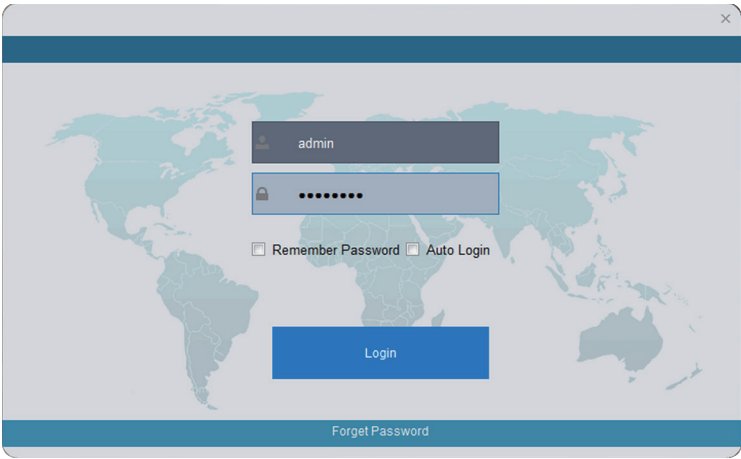
Install and running : "VMS_Eng" software.

(the MAC system is different from the Windows system CMS software)

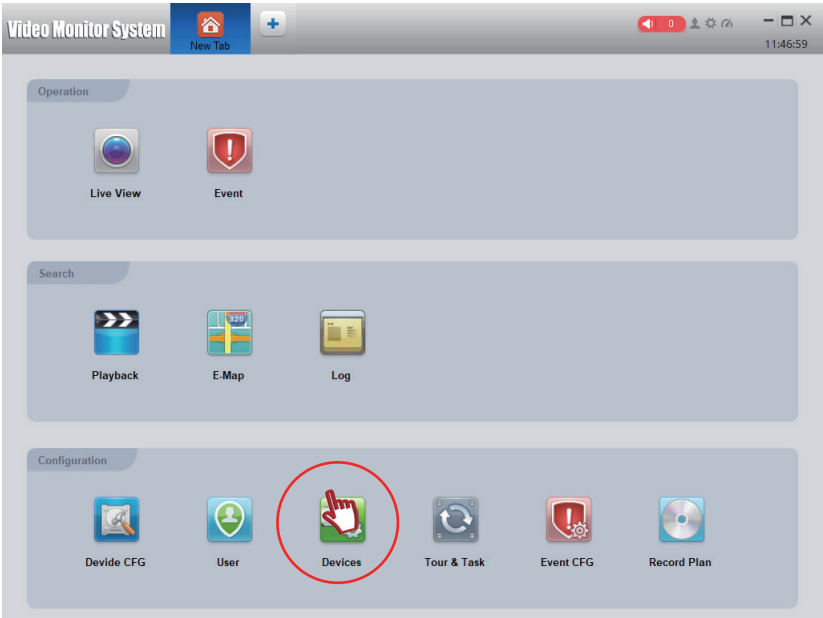
- (1) When you run the "VMS" client for the first time, you need to set the client's password.



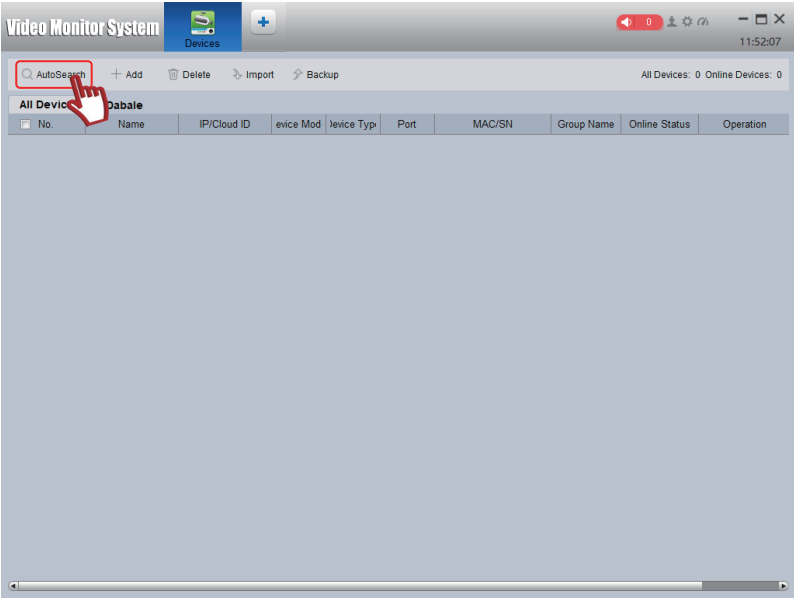
After setting the initial password,enter the username and password to login software.



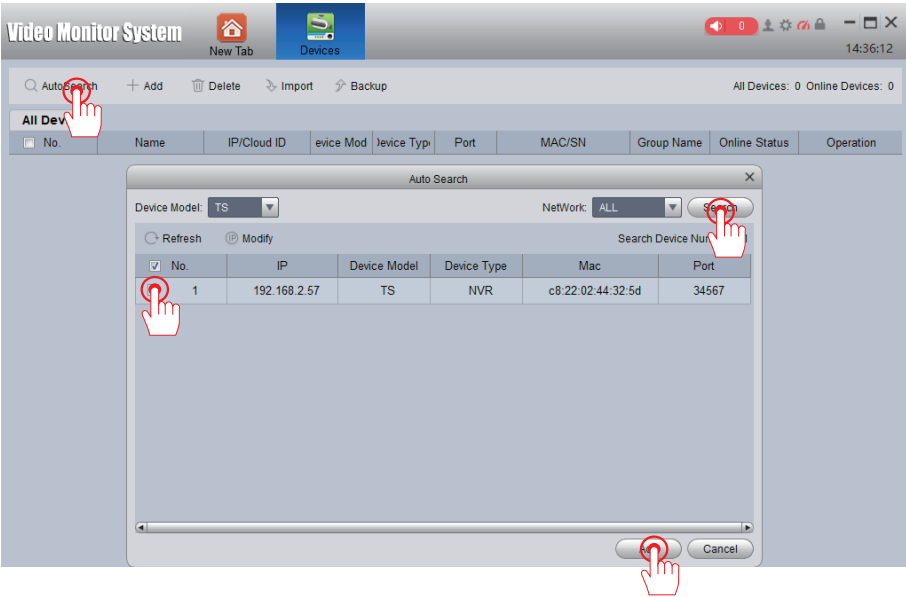
(4) After opening the computer software,click [Devices] to add device.



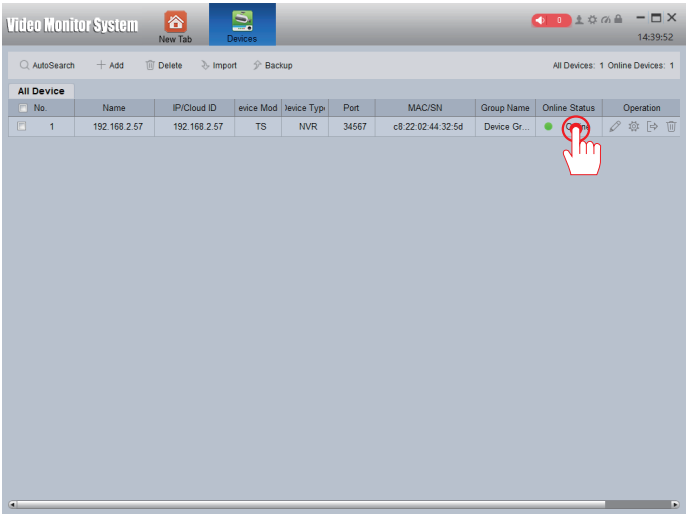
Click [AutoSearch]



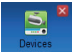
Select "TS" and click search, wait for dozens of seconds, the device will display.
Check the device and click [Add] to confirm.

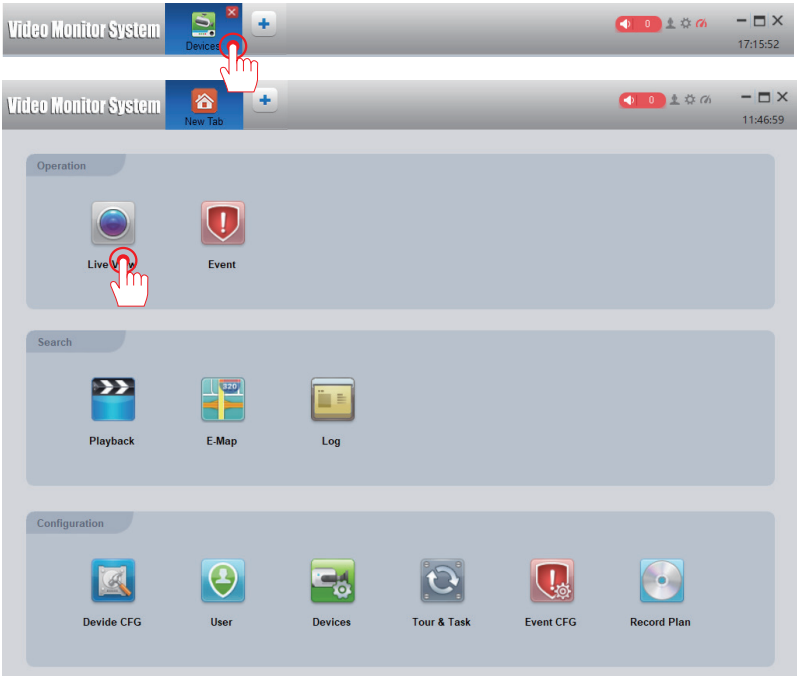


Make sure to add this device, the password is based on your NVR password, if not, please leave it blank. If the addition is successful, the indicator light is green, and it will prompt the device to be online. If it is not online, please check whether the computer and the DVR are in the same network segment.



Note: If you can't find the device by auto search,you can add it manually by entering the Device ID of the NVR.

Click the icon  and return to the main software interface,then click [Live View].



Right-click and select the added device and click "Open All Channel" to view the real-time picture.



[Playback]:used to play back the video saved in the NVR HDD.After clicking the button,you can search and play the corresponding videos according to the specific conditions.The steps are basically the same as those on the NVR.

[Screenshot]:used to capture the monitoring screen,the image will be saved in the computer.



Steps to set up view on Mobile Devices(iOS/Android)

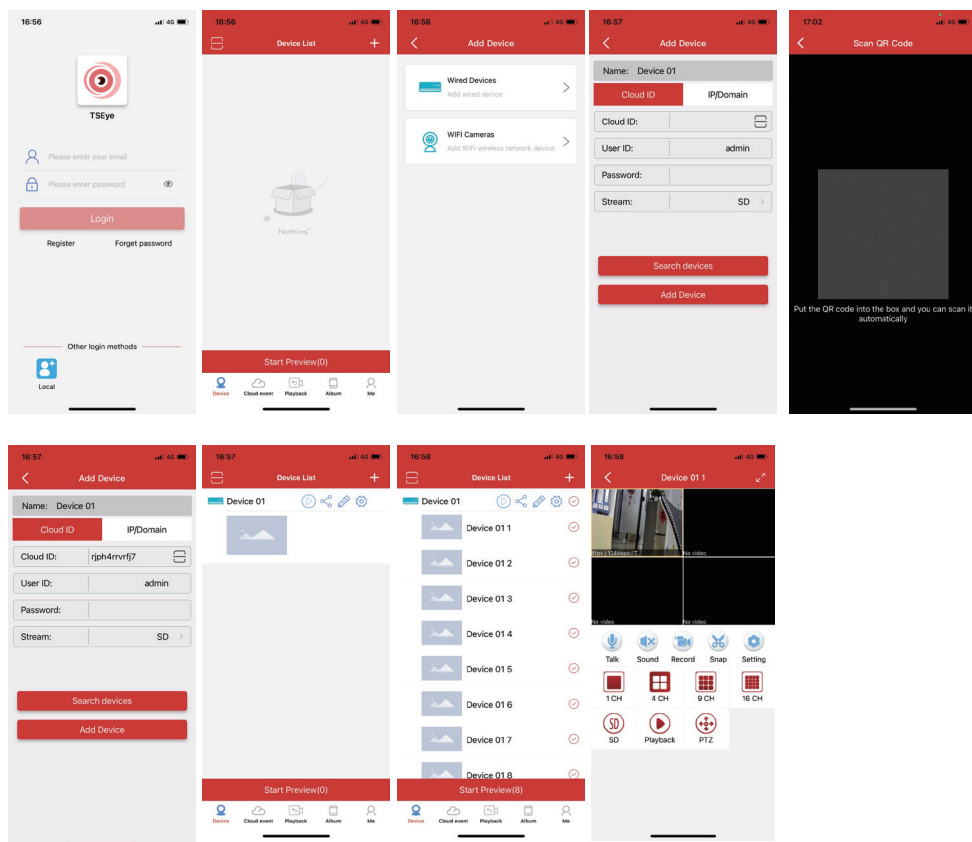
How to watch/playback videos on mobile phone APP?

Note: Before the computer/mobile phone connecting to the wireless system,you must connect the NVR and router with network cable.Please refer to "Network" for the specific networking setup steps.

(1) Scan the QR code on the manual and download APP.

(2) Open TSEye app in mobile phone for registration and login.The steps are as follows:

Click "Register" on the app Login interface, and then enter the email address, password and other related information on the "Registration" interface to register and log in.



(3)Instructions for using "TSEye"mobile phone app:

A.After entering the app,click the "+" button,and click "Wired Devices",then scan the NVR remote access Device ID QR code (you can also enter the Device ID manually).

B.Enter the device name and click "OK",when "Add Device Successfully"is prompted,return to the app homepage to see the monitoring device that has been added.

Note: The default username of the NVR device is admin and password is blank.

A.Click to play button the preview screen, you can click to use [Playback] for switching, [Snap] for capturing.

Q:What is the solution if the camera does not work and no picture shows?

A: 1,The distance of the wireless signal is 15 meters, please do not exceed this distance.

2. Keep the device away from devices with more interference, such as microwave ovens, base stations, and other devices with strong interference.

Q: How to add a new camera to NVR?

A: Power up the camera close to the NVR, press and hold the reset button of the camera for about 3 seconds, the image will appear.

Q: HDD hard disk not found?

A: 1. Confirm the specification and status of the power adapter. The NVR power adapter is DC 12V 2A power supply.

2. Remove the screws from the cover of NVR video recorder, check if there is something wrong with the power cord and data connection cable of the internal hard disk drive, plug and unplug the data cable to see if any loose contact, and replace the data cable for a retest if the data cable is bad.(Only support HDD, don't support SDD)

Q:If the hard drive is full,do I need to delete it manually?

A: When the hard drive is full, the previous video will be covered automatically in order to save the storage space of the new video. (You can't delete the individual video file.)

Even if all cameras are working, the built-in 1TB/2TB hard disk can work for a long time. The system supports up to 2.5 inch hard drives with 4TB SATA interfaces.

Note: HDD only supports the internal installation of the NVR video recorders, but not external installation.