

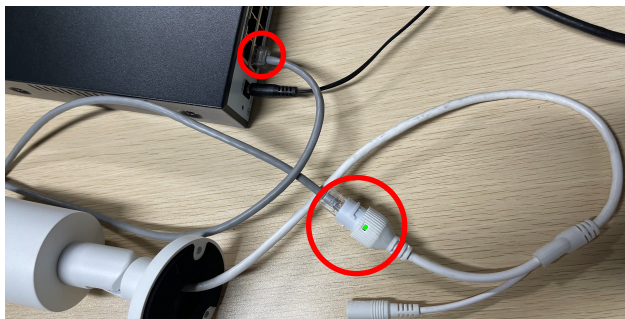
How to add a camera with the network video recorder (NVR)

Warning:

This model is a POE product. Before installation, if it is used in combination with our set, it must be connected directly to the LAN cable. When the indicator light on the tail cable flashes, it indicates that the power supply has been successfully connected. Indicator light on the tail cable flashes to indicate that the power supply has been successfully connected. When using this product alone, please make sure that the POE power supply is a national standard POE device.

If it is not POE powered, it must be connected to a 12V 1A power supply.

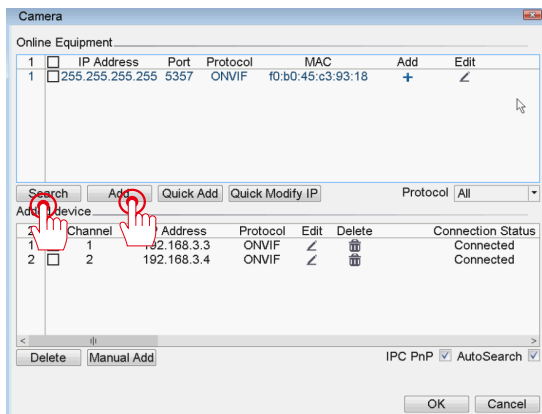
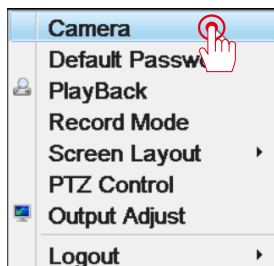
Step 1: Connect the camera to the WAN port of the NVR with the provided LAN cable.



Wait about 30 seconds and the image will be displayed.

Note: If you are unable to add a camera, please follow the instructions below.

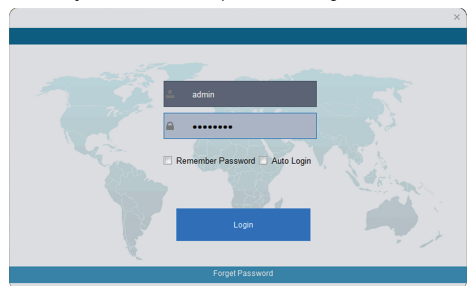
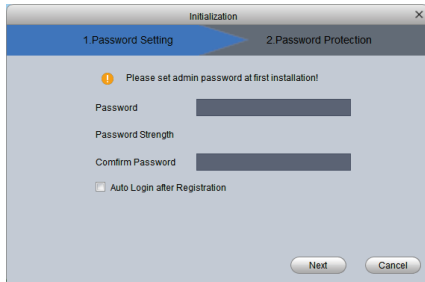
1. Press the right mouse button on the screen of the monitor to enter the "Remote device" screen.
2. Delete all channels, press the "Search" button, search all channels, press the Add button, and check if the screen is displayed. After searching all channels, press the "Add" button and check if the screen appears.
3. If you receive a password error: Enter the IPC password "admin123".



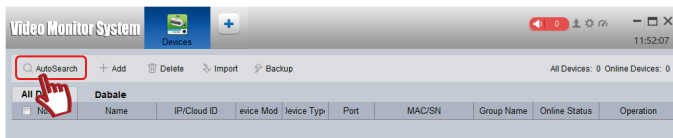
- (1) Enter the official JENNOV website (jennov.com/download-3/) and download the file "F-Series".
After unzipping the file, install the PC client "VMS".
- (2) After installing the client, run "VMS". After setting the initial password, enter the user name and password.
Enter your username and password to log in to the client

Note: If you are unable to add a camera,
Please follow the instructions below.

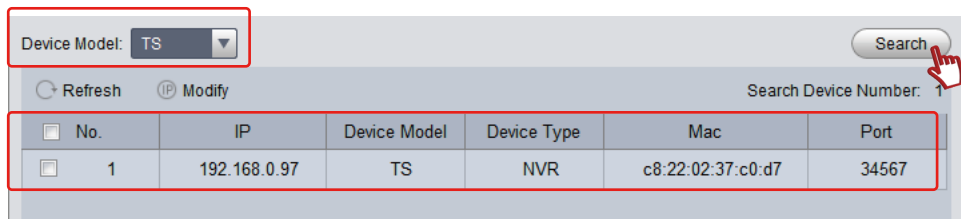
After setting the initial password, enter the username and password and log in to the client.
Enter your username and password to log in to the client.



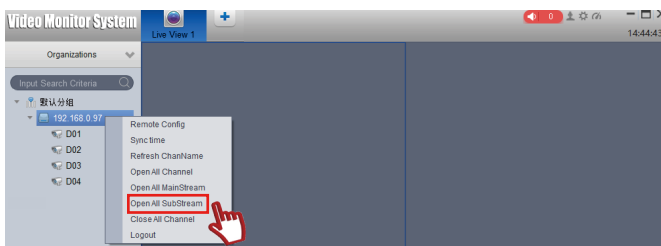
Click "AutoSearch"



Select "TS" for the device type to search, and after the search is complete, select the IP address of the device type NVR. Click "Add" and then click "OK".



Select the added device, right click and click "Open All Channel (Open All Channels)" for real-time monitoring.



Please note: The add-on camera can be monitored as a stand-alone device with PC software, but monitoring with a smartphone is not supported.

We appreciate your understanding.