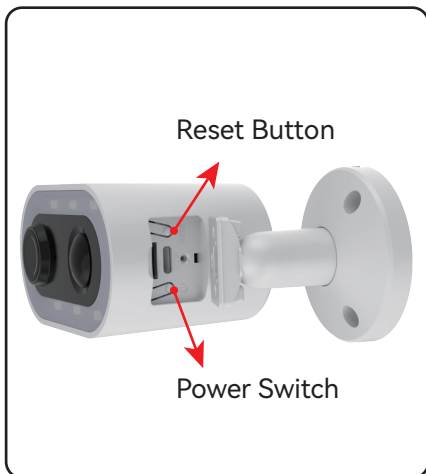


# Network port code matching-1

1

## Activate, Reset, and Prepare to Add to NVR

1. Press the camera power button for 5 seconds to activate the camera(There will be an audible prompt).
2. Press the camera reset button to reset the camera(Red light blinks after successful reset).
3. Let the camera close to the NVR (within 1 meter).

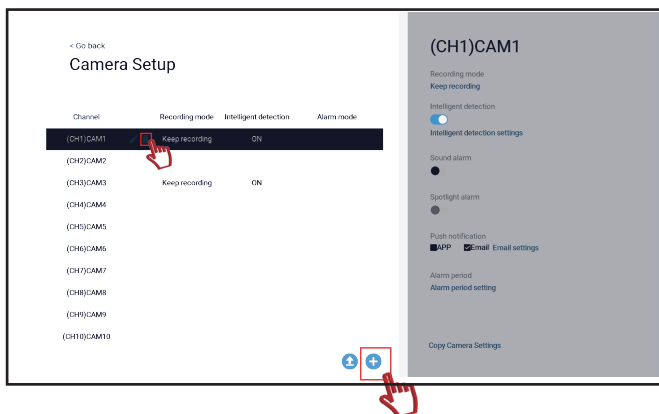
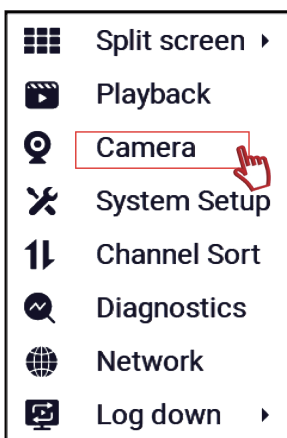


2

## NVR Operation

Right-click the mouse and select “Camera” .

Delete the camera that is not connected successfully (if available) and click on the “+” icon in the lower right corner.

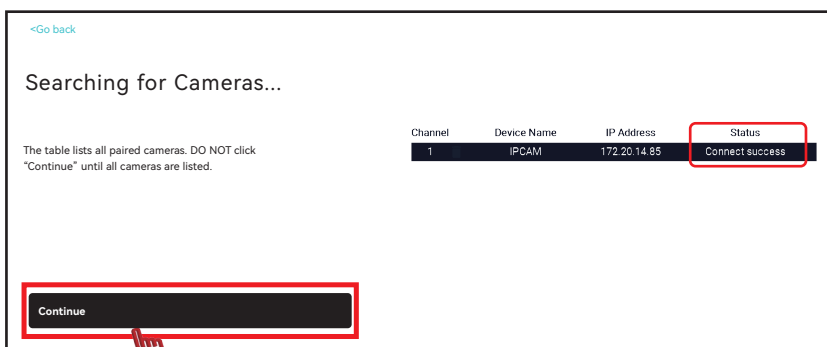
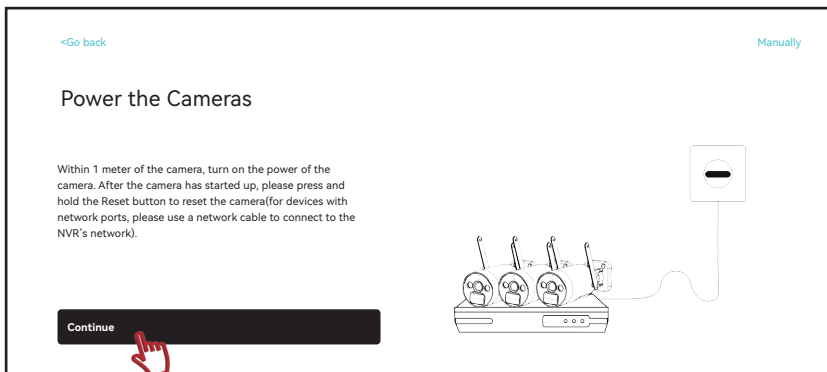


# Network port code matching-2

3

## Add camera

Click "Continue" on "Power the Cameras" interface --> Wait for the camera with an IP address starting with 172 to be successfully found and show a "Connect success" Status--> Click "Continue" to finish the connection.



Wait one minute, it will be finished when the screen comes out

